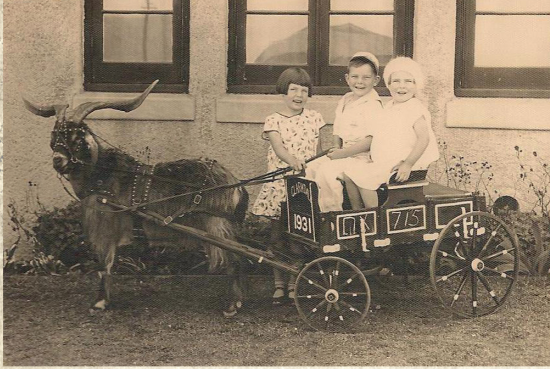


## Museum Collections & Research Facilities

The Clarkdale Museum provides a friendly, quiet atmosphere in which visitors can pursue research pertaining to numerous subjects, including towns of the Verde Valley, family genealogies, mining history, architecture, Native Americans, farming and ranching, and railroad history.



Our focus is the Verde Valley—primarily Clarkdale and its establishment by Senator William Clark—but we also have material relating to Jerome, Cottonwood, and Sedona. Holdings include original records of the Town of Clarkdale (1912-1957), such as house rental fees and utility bills; original blueprints of many of Clarkdale's residences; cemetery records for Cottonwood, Clarkdale, and Jerome; obituaries; and oral histories from long-time residents. Our large collection of photos and artifacts documents Clarkdale's social, recreational, political, and everyday life. Come visit us and discover something new about our town!

Dedication of the Clubhouse 11/20/38



## About Us

The Clarkdale Historical Society and Museum is a non-profit 501 c(3) corporation established in 2003 and managed by a Board of Directors. Memberships and contributions are tax-deductible to the extent allowable by law. Monthly meetings are open to the public.

Every community needs a home for its residents' cherished family records and for the important documents that record a town's birth, development, and growth. The Clarkdale Museum is filling that need for the Town of Clarkdale.

Cataloguing and preserving records and artifacts is time-consuming and costly. Volunteers are always needed to serve as hosts in the museum or at special events or to help with specific projects.

We would appreciate having you join us in this important community effort by becoming a member of the society or by making a contribution to the museum. Membership is available at varying levels, with benefits including discounts on items from the bookstore. Donations of items pertaining to Clarkdale's history are always welcome and enrich and broaden our presentation of the town's history to visitors.

Please call (928) 649-1198 to learn more about how you can join in our efforts. Thank You!

Town Hall Building 1960s - Now the Museum



Printing donated by our friends at



## Clarkdale Historical Society & Museum

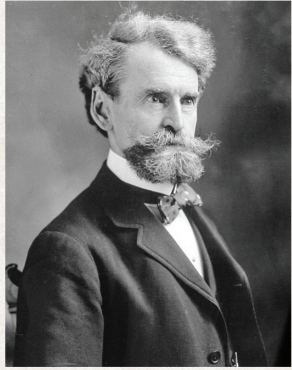
900 First North Street  
P.O. Box 806  
Clarkdale, AZ 86324  
[info@clarkdalemuseum.org](mailto:info@clarkdalemuseum.org)  
[ClarkdaleMuseum.org](http://ClarkdaleMuseum.org)  
Wed 10am - 1pm  
Thu - Sat 11am - 2pm  
928 649-1198



The Clarkdale Historical Society and Museum is Clarkdale's Only Organization and Museum Totally Dedicated to Collecting, Preserving, Exhibiting, and Sharing the Heritage of the Clarkdale Community and Its Citizens

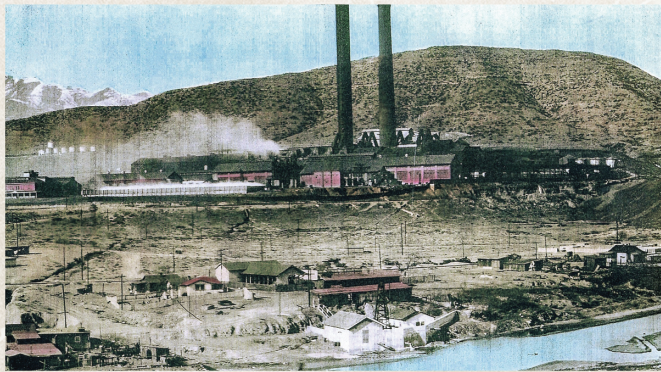


## A Little Clarkdale History



The town of Clarkdale is located on the banks of the Verde River in north central Arizona. Founded in 1912, Clarkdale is renowned as the first master-planned company town in the state of Arizona. Senator William Andrews Clark, owner of the United Verde Copper Company

and one of America's richest men, built Clarkdale to provide housing and services for the employees of his copper smelter. The extensive smelter complex, located on the hillside behind the Clarkdale Museum, processed copper ore brought down from the mines in Jerome between 1915 and 1953. The smelter produced a total of two billion pounds of pure copper.



Clarkdale was designed with four distinct neighborhoods based on a class structure: Upper Town housed the mine supervisors and professionals and had a variety of architectural styles with wide streets and sidewalks. Modern conveniences such as electricity, sewers, and



copper water piping to each house were standard, which was almost unheard of in early Arizona.

Lower Town comprised neoclassical houses and duplexes and was where the blue collar workers lived. Patio Town was established for the Mexican smelter workers and was so-named because of the open breezeways between each family's connected home units. Rio Vista, near the Verde River, was where people built their own homes on land rented from the United Verde Copper Company.



Clarkdale contained a commercial area with a theater, a bank, and a large general store; an administrative center with a post office; schools; cultural and recreational facilities, including a library and a clubhouse with a gymnasium, swimming pool, and bowling alley; ball fields; a golf course; and a park with a bandstand and playground.



In 1998 the original townsite of Clarkdale was listed in the National Register of Historic Places. Consisting of 386 structures, it forms the largest historic district in rural Arizona. Today Clarkdale retains its original town appearance and style and its sense of unity, making it one of the best places in Arizona to view architectural styles of the early 1900s.

## Inside the Museum

Rotating exhibits highlight events and people significant in the history of Clarkdale and the surrounding regions. Geology, natural history, and Native American exhibits greet visitors. Artifacts portray both the early grandeur and the working-class ethic that characterized the company town of Clarkdale. A variety of books are available on the history of Clarkdale and the Verde Valley.



## Special Events

- ❖ Historic Building & Home Tour
- ❖ Historic Clark Memorial Clubhouse Guided Tours
- ❖ First Fridays "In Their Own Words" Talks
- ❖ Arizona Humanities Programs
- ❖ And so much more!

Visit our website for schedule and details:  
[ClarkdaleMuseum.org](http://ClarkdaleMuseum.org)

